

### ST-06 EEV Stem Repair Tool:

The ST-06 EEV Stem Repair Tool is used to replace the steel dimple on the top of the EEV valve body plunger (stem) in the event it is broken or damaged. The recess in the steel dimple keeps the shaft of the stepper motor (EEV power assembly) centered on top of the plunger. The ST-06 Tool is for temporary repair only, the EEV valve body will need to be replaced.

**Step 1:** Place the system in the service function mode that drives all EEVs to the fully open position.

**Step 2:** Remove the EEV stepper motor (power assembly).

**Step 3:** Remove all pieces of the broken or damaged steel dimple.

**Step 4:** Slide the repair dimple over the top of the EEV valve body plunger and push down to make sure it is fully inserted.

**Step 5:** Re-install the EEV stepper motor.

**Step 5:** Remove the system from the service mode and reset.

**Step 6:** Restart the system and verify the EEV is operating normally.

Factory Dimple



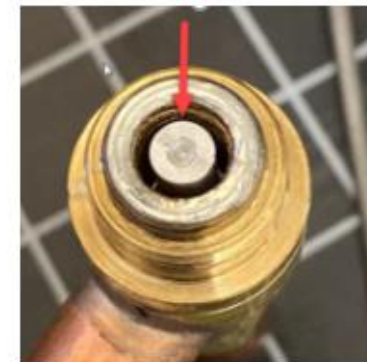
Dimple Removed



ST-06



Repair Dimple Installed



**Reminder:** The ST-06 EEV Stem Repair Tool is for temporary use only. The EEV valve body should be replaced as soon as possible.

**\* This EEV Stem Repair Tool should only be used by qualified technicians who have been properly trained for troubleshooting and repairing VRF equipment.**

**VRF Specialty Tools assumes no liability for damage to the equipment, or the tool itself, as a result of improper use of the tool and/or failure to verify normal equipment operation after the tool has been used.**

**Limited Warranty:**

**Thank you for your purchase. All items sold by VRF Specialty Tools are warranted for 1 year from the date shipped. Warranty does not cover obvious physical damage from mishandling or exposure to water.**

**To obtain warranty please fill out the information below and email to [bld529.vst@gmail.com](mailto:bld529.vst@gmail.com).**

**Name** \_\_\_\_\_

**Address** \_\_\_\_\_

**City, State, Zip** \_\_\_\_\_

**Item #** \_\_\_\_\_

**Date Purchased** \_\_\_\_\_

**Issue** \_\_\_\_\_

\_\_\_\_\_